A scenic landscape at sunset. The sun is low on the horizon, casting a warm glow over a range of mountains. The foreground is filled with tall, green grass. The sky is filled with soft, colorful clouds.

+ the
SERMON
on the
MOUNT

THE SERMON ON THE MOUNT FOR LENT

Lenten Worship 2020

Holden Evening Prayer

Resurrection Lutheran Church

Cary, NC

919-851-7248

Our Order of Worship for midweek Lenten services this year is an adaptation of Evening Prayer (*LSB* 243-252) inspired by the Holden Village Community, WA.

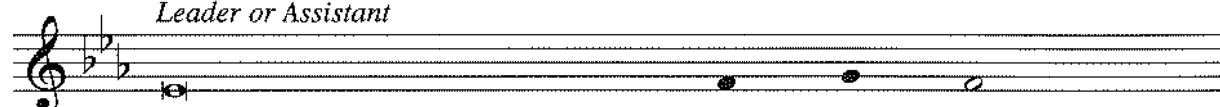
This series for Lent takes parishioners through some of the most familiar teachings of Jesus from His Sermon on the Mount in Matthew 5-7 and relates them to the events surrounding Christ's Life, Death and Resurrection. In the process, it will powerfully be revealed that the cross itself is the ultimate "Sermon on the Mount" for our journey of faith during this sacred season.

WELCOME

1. SERVICE OF LIGHT

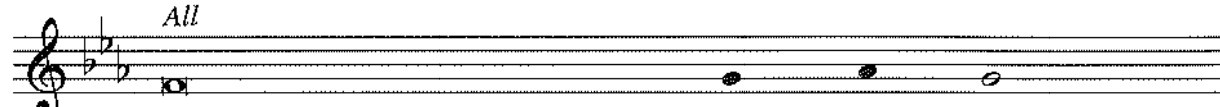
Procession

Leader or Assistant



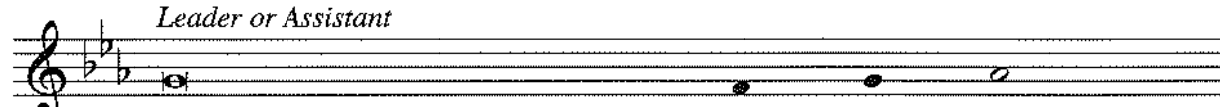
Jesus Christ, you are the light of the world,

All



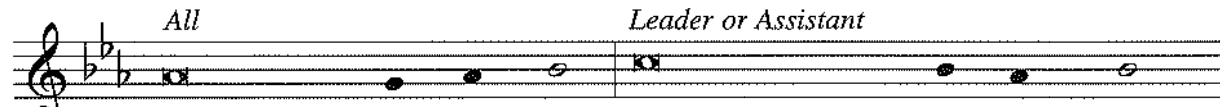
the light no darkness can o - ver - come.

Leader or Assistant




Stay with us now, for it is evening,

All *Leader or Assistant*



and the day is al - most over. Let your light scat - ter the darkness,

All

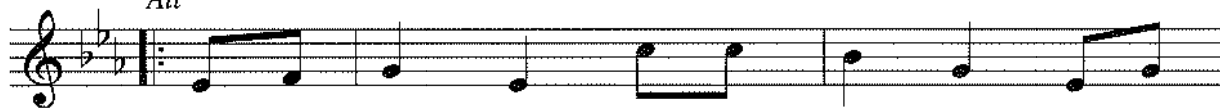


and shine within your peo - ple here.

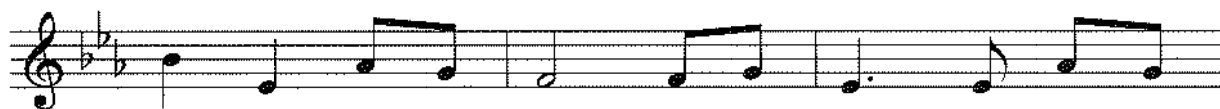
Evening Hymn

Joyous Light of Heavenly Glory

All



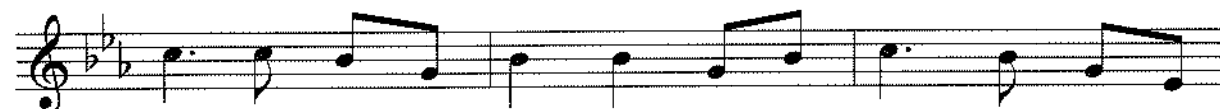
1. Joy - ous light of heav'n - ly glo - ry, lov - ing
2. In the stars that grace the dark - ness, in the
3. You who made the heav - en's splen - dor, ev - 'ry



glow of God's own face, you who sing cre - a - tion's
blaz - ing sun of dawn, in the light of peace and
danc - ing star of night, make us shine with gen - tle



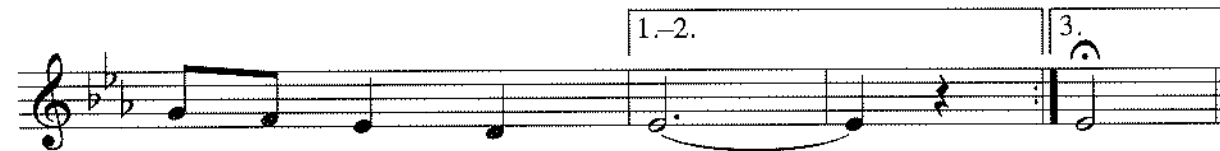
sto - ry, shine on ev - 'ry land and race. Now as
wis - dom, we can hear your qui - et song. Love that
jus - tice, let us each re - flect your light. Might - y



eve - ning falls a - round us, we shall raise our songs to
fills the night with won - der, love that warms the wea - ry
God of all cre - a - tion, gen - tle Christ who lights our



you. God of day - break, God of shad - ows, come and
soul, love that bursts all chains a - sun - der, set us
way, lov - ing Spir - it of sal - va - tion, lead us

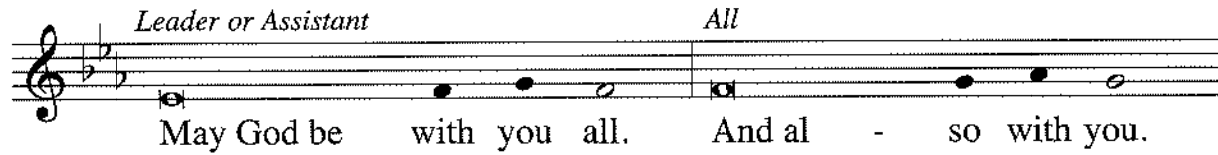


light our hearts a - new.
free and make us whole.
on to end - less

day.

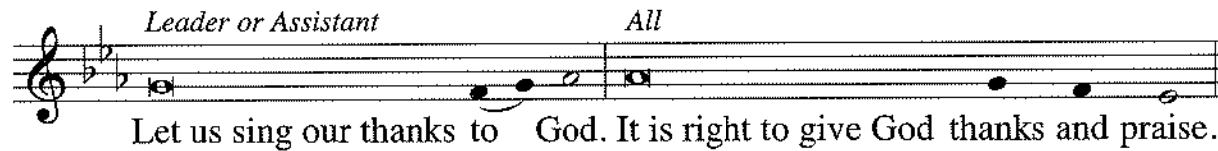
Evening Thanksgiving

Leader or Assistant *All*



May God be with you all. And al - so with you.

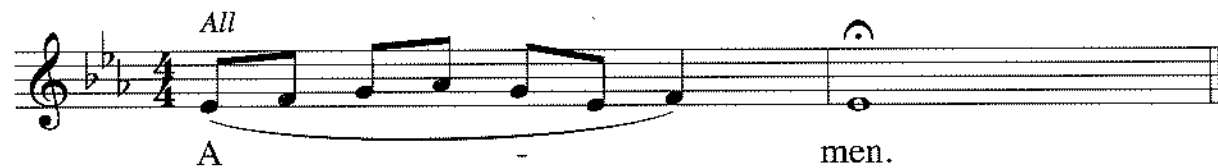
Leader or Assistant *All*



Let us sing our thanks to God. It is right to give God thanks and praise.

Leader Blessed are you, Creator of the universe, from old you have led your people by night and day. May the light of your Christ make our darkness bright, for your Word and your presence are the light of our pathways, and you are the light and life of all creation.

All



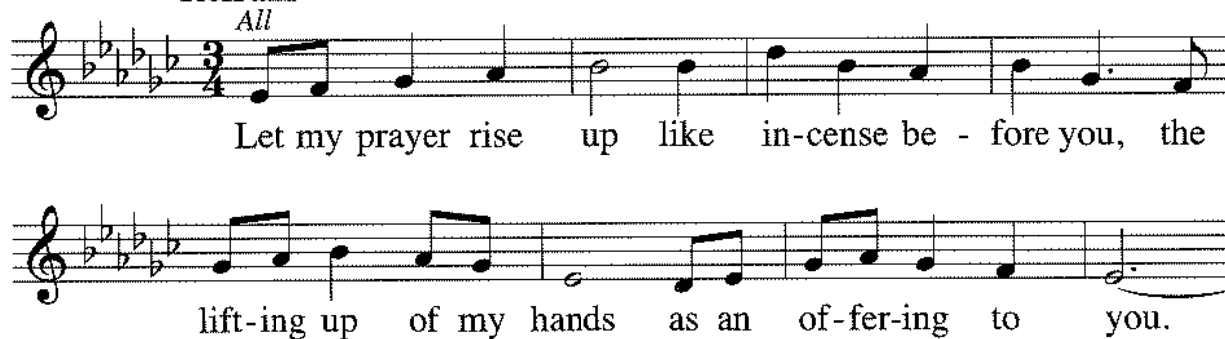
A - men.

2. PSALMODY, READINGS and CANTICLES

Psalm 141

Refrain

All



Let my prayer rise up like in-cense be - fore you, the

lift-ing up of my hands as an of-fer-ing to you.

Verse 1

Leader or Group One

1. O God, I call to you, come to me

All or Group Two

1. O God, I

now; O hear my voice when I cry to

call to you, come to me now; O hear my

Refrain

you. Let my prayer rise up like

voice when I cry to you. Let my prayer rise

in-cense be - fore you, the lift-ing up of my hands as an

up like in-cense be - fore you, the lift-ing up of my

Verse 2

of-fer-ing to you. 2. Keep watch with -

hands as an of-fer-ing to you.

in me, God; deep in my heart may the light of your

2. Keep watch with - in me, God; deep in my

love be burn - ing bright.

heart may the light of your love be burn - ing

Refrain

Let my prayer rise up like in-cense be - fore you, the

bright. Let my prayer rise up like in-cense be -

lift-ing up of my hands as an of-fer-ing to you.

fore you, the lift-ing up of my hands as an of-fer-ing to

Verse 3

3. All praise to the God of all, Cre - a - tor of

you.

3. All praise to the

life; all praise be to Christ and the Spir - it of

God of all, Cre - a - tor of life; all praise be to

Refrain

love. Let my prayer rise up like

Christ and the Spir-it of love. Let my prayer rise

in-cense be - fore you, the lift-ing up of my hands as an

up like in-cense be - fore you, the lift-ing up of my

of-fer-ing to you.

hands as an of-fer-ing to you.

Silence for meditation

Leader May our prayers come before you, O God, as incense,
and may your presence surround and fill us,
so that in union with all creation,
we might sing your praise and your love in our lives.

All Amen.

(Alternate psalms are on pages 10–12. The leader will indicate if any of these will be used in the service.)

One or two lessons are read; silence for meditation follows each reading.

Leader The light shines in the darkness...

All ... and the darkness has not overcome it.

Readings

The Passion History - On Calvary's Cross

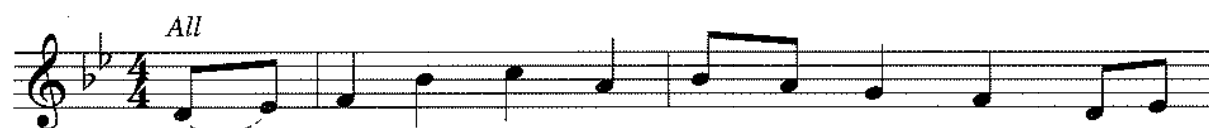
Message **SERMON on the MOUNT** *Build on the Rock* Matthew 7:24-27

The Annunciation - *Luke 1:26-28, 30-32, 38*

Leader: An angel went from God to a town called Nazareth to a woman whose name was Mary. The angel said to her, "Rejoice, O highly favored, for God is with you. You shall bear a child, and his name shall be called Jesus, the Chosen One of God Most High." And Mary said, "I am the servant of my God, I live to do your will."

The Magnificat

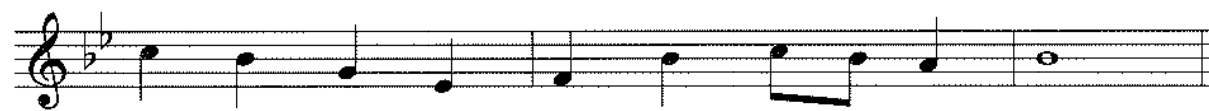
Luke 1:46-55



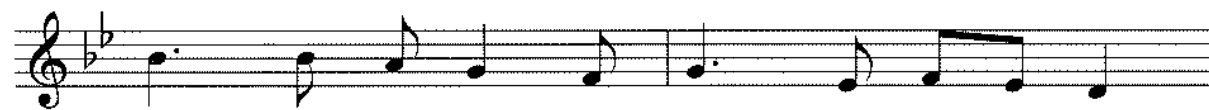
1., 3. My soul pro-claims your great-ness, O God, and my
2. You have cast the might - y down from their thrones, and up -



spir - it re - joic - es in you. You have looked with love on your
lift - ed the hum - ble of heart. You have filled the hun - gry with



ser - vant here, and blessed me all my life through.
won - drous things, and left the wealth - y no part.



Great and might - y are you, O Ho - ly One,
Great and might - y are you, O Faith - ful One,



strong is your kind - ness ev - er - more. How you fa - vor the
strong is your jus - tice, strong your love, as you prom - ised to



weak and low - ly one, hum - bling the proud of heart!
Sar - ah and A - bra - ham, kind - ness for - ev - er - more.

3. LITANY AND PRAYERS

Intercessions

All
[A] *repeat continuously* [B]



Hmm. God of mer-cy, hold us in love.

[A] *Leader or Assistant* [B]



1. In peace, in peace, we pray to you:
2. For peace and sal - va - tion, we pray to you:
3. For peace be-tween na-tions, for peace be-tween peo - ples:
4. For us, who are gath-ered to wor-ship and praise you:
5. For all of your ser-vants who live out your gos - pel:
6. For all those who gov - ern, that jus - tice might guide them:
7. For all those who la - bor in ser-vice to oth - ers:
8. Grant weath-er that nour-ish - es all of cre - a - tion:
9. Keep watch on our loved ones and keep us from dan - ger:
10. For all the be - lov - ed who rest in your mer - cy:

[A] *Leader or Assistant*



Help us, com-fort us, all of our days:

All



Keep us, hold us, gra - cious God.

Closing Prayer

Leader: Great and merciful God,
source and ground of all goodness and life,
Give to your people the peace that passes all understanding,
And the will to live your gospel of mercy and justice,
through Jesus Christ our Lord.

All: Amen.

Leader: God, remember us in your love, and teach us to pray:

All: Our Father in heaven, hallowed be your name,
Your kingdom come, your will be done,
on earth as in heaven.

Give us today our daily bread.

Forgive us our sins as we forgive those
who sin against us.

Save us from the time of trial and deliver us from evil.

For the kingdom, the power, and the glory are yours,
now and forever. Amen.

Final Blessing

Leader or Assistant *All*

Let us bless our God: Praise and thanks to you.

Leader or Assistant

May God, Cre - a - tor, bless us and keep us, may

Christ be ev - er light for our lives, may the Spir - it of Love be our

All

guide and path for all of our days. A - men.

Offering

Please know that when worship services stop our offering income decreases. We are grateful for all who are able to maintain their financial contributions to our congregation! Feel free to mail your donations (we now have a locking mailbox), download and connect through the "Give+" app on your smartphone or other device, or donate through our website at www.rlcary.org/ministries/online-giving.

Worship Leaders

Rev. Dr. Jonathan Blanke
Vicar Alan Shaw
Robert E. Unger, Director of Worship and Music Ministry

Acknowledgments

Holden Evening Prayer. Copyright © 1990, 2016 by GIA Publications, Inc. All rights reserved. www.giamusic.com. One-License.net A-701709.

Lenten Offerings to Benefit Charities

Each year, RLC collects a special offering throughout Lent to benefit a variety of charities and ministries. This year's offerings will be donated to the following:

Food Bank of Central & Eastern North Carolina

<https://foodbankcenc.org/>

Urban Ministries

<https://urbanmin.org/>

Urban Ministries of Wake County engages our community to serve and advocate on behalf of those affected by poverty by providing food and nutrition, promoting health and wellness, and by laying the foundations of home.

H. E. R. O. E. S. Care (Homefront Enabling Relationships, Opportunities, and Empowerment through Support)

<https://heroescare.org/>

A collaborative effort among well established non-governmental organizations (NGOs) are designed to provide complete and proactive support for members of all branches of the military and their families through pre-deployment, deployment, family reintegration and post-deployment.

The program consists of a network of tens of thousands of trained caregivers and thousands of professional mental health care and service providers working together to provide an unprecedented system of support for military members and their families.

Church Staff

Senior Pastor	Jonathan A. Blanke	919-851-7248 x22	jonathan.blanke@rlcary.org
Vicar	Alan C. Shaw	919-851-7248	alan.shaw@rlcary.org
Director of Music Ministries	Robert E. Unger	919-851-7248 x25	robert.unger@rlcary.org
Praise and Worship Leader	Christopher Reed	919- 851-7248	bluejeansstudios@gmail.com
Connections Coordinator	Deb Oesterling	919-851-7248 x31	deb.oesterling@rlcary.org
High School Youth Director	Jenny Piontek	919-851-7248 x24	jenny.piontek@rlcary.org
Middle School Youth Director	LeAnn Trautman	919-851-7248 x62	leann.trautman@rlcary.org
Co-Dir Children/Family Min.	Lea Webb	919-851-7248 x62	lea.webb@rlcary.org
Co-Dir Children/Family Min.	MaryAnn Unger	919-851-7248 x62	maryann.unger@rlcary.org
Director of Operations	Margaret Hyatt	919-851-7248 x38	margaret.hyatt@rlcary.org
Communications Specialist	Susan Moore	919-851-7248 x33	susan.moore@rlcary.org
Office Assistant	Linda Merrill	919-851-7248 x21	linda.merrill@rlcary.org
Facilities Manager	Garett Nigg	919-851-7248 x26	gsnigg@gmail.com
Preschool Director	Diane Hooper	919-851-7270 x29	dianeh@rlpcary.org
School Principal	Tom Kolb	919-851-7271 x60	tomkolb@rlscary.org
School Admissions	Rosie Creasy	919-851-7271 x35	rosiecreasy@rlscary.org